



February 2011

Mission Voice

of the MO Conference
United Methodist Women

Inside This Issue

Della Lamb	2
Legislative Event	2
Program Resources	3
Connecting	3
Mai Gray Charter for Racial Justice Club	4-5
Mabel's Muse	6
Get Involved	6
Social Action Opportunity	6
Mission Today Short Reporting Form	7
Mission Walk	8
Mission Walk Registration Form	8
Don't Forget	8

The Mission Voice is a bi-monthly publication of the MO Conference UMW. The paper subscription rate is \$5 for the year. To update your address or to subscribe, contact Katie Willis, Editor at:

1568 Highway J
Wright City, MO 63390
(636)745-2272
mrskatiebugs78@centurylink.net

Visit online at:
www.moumethodist.org/umw

The 2011 Missouri Conference UMW Legislative Event is Fast Approaching!

~Rachel Bachenberg, Social Action Chair

United Methodist Women are involved in many areas of Social Action. Regular checking on the UMW web page helps to keep members informed about current areas of action and how to participate in action. This article is being written as CNN is on in the background. "Witnessing a Miracle" speaks of the hopefulness of the healing of a Arizona legislator. As one is hearing the music that was played at the funeral of a nine year old girl born on 9-11 and died last Saturday. It is sad that she has bookends of violence at the edges of her life. The news this week has been filled with the reality of an Arizona law on the books related to helping those in the midst of a mental health crisis...a law that very few seemed to know even existed. This tragedy in Arizona has captured our nation and has caused many to pause about how our communities interact with one another. Discussions about gun violence and mental health are suddenly taking place in many areas that have been silent for awhile. To say that this deadly assault of innocent people in a Safeway parking lot could have been prevented and it is about time this discussion is taking place. And as UMW, there is a place for us to be part of the discussion. There is another discussion that is suddenly being opened once again. It has been silent and uncomfortable since biblical times. The subject is mental health. It is painful at many levels...within families, communities, and within political discussions. As the preparation has been made for the 2011 Missouri Legislative Training Event in March, there is concern about how the state is dealing with the funding for Mental Health Care. As a nurse who works at a hospital which is next to Western Missouri Mental Health Center, with the TMC parking garage across the

street from the Emergency Room entrance to that facility, it seems that the ER at the hospital is a much busier place. Is it because there are more medical emergencies or that as a society, a mental health crisis is harder to access? As United Methodist Women there is a concern about violence in our society and how we can prevent it. Let's not forget international tragedies, like the "anniversary" of the Haiti earthquake. Both realities that happened last Saturday, remind us that we are citizens of the world and we are called to help all women, children and youth.

In Memory of Carol Renfro

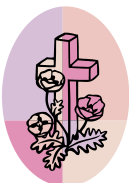
~Nancy Kincaid

Services for Carol A. Renfro (1947-2011) were held in Kearney, Missouri, on Friday, January 21, 2011. She passed away suddenly on Monday morning, January 17th.

Carol and her family were long time members of the Kearney First United Methodist Church, where she taught an Adult Sunday School Class.

After her retirement, as a Family and Consumer Science Teacher in the Kearney Schools, Carol became very active in United Methodist Women, attending Schools of Christian Mission, and holding Local, District and Conference Offices. At the time of her passing, Carol was the Missouri UMW Conference Vice President.

A quiet leader, Carol excelled at organization and planning, and her skills were evident in the Annual Meetings and plenaries that she organized at our Conference Events. We will miss her greatly.



Della Lamb helps Communities!

-Nancy K. Kincaid

Della Lamb Community Services is reaching out to United Methodist Women in the Missouri Annual Conference of the United Methodist Church. As a designated mission of the General Board of Global Ministries, our mission relies on the generosity of United Methodist Churches nationwide, but we know we have special friends in Missouri.

Della Lamb has provided assistance to low-income families in the Northeast Neighborhood since 1897. There really was a Della C. Lamb, who saw a need to help Italian immigrant families adjust to life in America. She and her Methodist friends taught English classes, cooking classes, hosted a Day Care, and conducted Bible Study.

Today, Della Lamb Community Services offers many services. We have Adult English Classes, operate an Elementary Charter School, Pre-School, Day Care, and provide Social Assistance to our clients.

Della uses volunteers in many of our programs, and we are always asking for more help.

We appreciate in-kind donations of new items, any time of the

year. Money is always needed.

Special Asks:

- Full size bottles of dish detergent and laundry soap, bars of hand soap, and shampoo. Paper products (toilet paper, paper towels and facial tissue)
 - Adult Volunteers, morning and evening, to tutor (converse) with adults learning English.
 - New socks and underwear (for children) for Operation Santa Claus and Operation Back to School
 - Prayers for Della Lamb Community Services Clients and Staff
- Groups to do Mission Projects lasting hours or days.

Nancy K. Kincaid
Director of Volunteers
Della Lamb Community Ser-
vices



Still Time to Register

While the deadline for Legislative Event registration has come and gone, you can still get in the action! The minimal late

fee is worth the price for what you'll learn and experience at the Capitol. Debates, discussions of current topics, information, and escape from the win-

ter blahs can be yours. Join us March 1-2. Registration forms can be found online or contact Linda Jackson at (816) 765-2324

Acts of Mercy

Legislative Training Event

Matthew 25:31-46

March 1-2, 2011

Pathway to Justice

The following is important information regarding shuttle service for the Legislative Event. Shuttle service is being offered due to having part of the Event at Jefferson City First UMC. Betty Knapp is coordinating this leg of the Legislative Event. If you should have any shuttle concerns while at this event please contact her at the number listed in this article. We will have hostesses at First UMC and at the Capitol Plaza. The hostesses will assist you in lending a hand to lead you in the right direction. Upon arriving we encourage everyone to park at the Capitol Plaza and

we will get you shuttled over to the church to start the event. Further instructions will be found in your confirmation letter.

TUESDAY

8:00 – 12:00 Capitol Plaza Hotel to 1st UMC
12:15-12:30 1st UMC to Capitol
12:55-1:30 Capitol to 1st UMC
5:00-5:30 1st UMC to Capitol Plaza Hotel
5:30-6:00 Capitol Plaza to 1st UMC
8:30-9:30 1st UMC to Capitol Plaza Hotel

*Evening parking is available at the restricted lots near 1st UMC after 5 p.m. if you wish to drive yourself to the evening events.

WEDNESDAY

10:30-10:50 Capitol Plaza Hotel to Tours

FOR FUTHER HELP CALL Betty Knapp at 636-219-2363

STARTING TIME

Tuesday, March 1, 2011

Registration starts at 8:00 a.m.

Changing Lives for the Better ~Carol Renfro

Are resolutions good? Making a resolution can be good only if they are made and then followed. Have resolutions been made as a United Methodist Women? National and international mission resolutions should always be made and followed. But how can UMW unit resolutions be made and accomplished.

Perhaps the most important resolution a unit can make is to increase members. But how can units add more members in a meaningful way?

First talk to the women who are not members and find out what kind of activities they would enjoy. Now the unit can plan activities that all the women would enjoy and find worthwhile.

Some ideas and suggestions that might work in increasing membership could include:

1. If adding women to a current unit or circle or group is a goal, then a personal invitation might get women to attend. It is not enough to invite them, but actually offer them a ride. And they must be made to feel welcome. Don't let them sit off to one side and ignore them. Make them feel welcome so they will want to come back.

2. A short term activity could also be important for some women. Is a mission activity important for some? And can this activity be accomplished in a month or less? This may attract some women to UMW.

3. Food and United Methodist Women seem to go together. But some groups do not have time to include food and do not want the bother of furnishing refreshments. Meet for an hour and decide how to divide the time. Do the participants want to have a Bible study? Or do they want to do a mission activity? Food or refreshments might not be important in this group.

4. Socialization can certainly be important for some women in UMW. But not everyone wants to spend time away from family "just visiting." The time they spend away from their family needs to be important. These women might prefer an emphasis on a mission activity. And remember mission activities can be local as well as national and international.

All kinds of women enjoy UMW activities. But remember that the women who participate in UMW are very different in terms of interests, activities, families, and ages.

Important Announcement



Due to Carol Renfro's untimely death we had a special election this weekend to fill the void left from her absence. The Mission Team wanted everyone to know that we nominated Paula Ackerson. Her phone is listed below. 417-781-0622 Paula64801@yahoo.com 622

Spiritual Growth Retreat ~Alexis Robinson and Shari Scott

The Journey of the Red Thread: A Biblical Response to Brokenness and Shalom

Leader: Rachel Bachenberg

May 13 7-9 p.m.

May 14 9-2:30 p.m.

Young Women's and MO Conference UMW at The Rickman Center in Jefferson City.

Flyers and Registration forms available shortly on-line and will be in full coverage in the next Mission Voice in April.



How can I subscribe to Response and/or New World Outlook?

~Linda Page, Program Resources

If you have not subscribed to the Response magazine through your local unit, there are four ways you can order it individually. You can subscribe to New World Outlook using this same contact information.

Subscribe by mail: Magazine with a Mission
P.O. Box 395
Congers, NY 10920-0395

Subscribe by phone: 1-877-881-2385 (toll-free)
Subscribe by fax: 1-845-267-3478

Subscribe on-line: missionresourcecenter.org
Look on the left for Response and New World Outlook subscriptions.

Prices:

Response 1 yr. (11 issues) \$24.00
2 yr. (22 issues) \$45.00

New World Outlook

1 yr. (6 issues) Digital Go Green \$10.00
1 yr. (6 issues) Print \$24.00
2 yr. (12 issues) " \$42.00
3 yr. (18 issues) " \$60.00

If you would like a single issue of Response contact the Mission Resource Center at 800-305-9857. For single copies of New World Outlook order from Cokesbury.com.

2011 CRITERIA FOR THE MAI GRAY CHARTER FOR RACIAL JUSTICE CLUB

Become a member of "The Mai Gray Charter for Racial Justice Club" by completing any four (4) of the following action steps and documenting how your unit fulfilled the requirements to your District President by December 31, 2011.

1. Celebrate diversity by respecting the traditions of different groups, attending holiday festivities of a culture other than your own and/or recreating elements of such festivities in local meetings or events. Examples of traditional holidays are:

Kwanza (African American)	Tet (Vietnamese)
Cinco de Mayo (Mexican)	Sol Day (Korean)
Hanukah (Jewish)	Oktoberfest (German)
Kodomo-No-Hi (Japanese)	Polski (Polish)
Odwira (West Africa)	

2. View one of the videos listed below and have a group discussion of the video at a UMW unit or circle meeting. Determine some specifics of how you can advocate for an interracial/multicultural church, work to eliminate racism and/or to combat hate crimes. Include the following reflections/questions:

What is racism? What are the blessings and costs of differences?

What lessons have you learned about interacting with people who are different from you?

- A. **Not in Our Town**, video (1995, 30 minutes, Color). This is the inspiring story of the people of Billings, Montana who joined together to stand up for Jewish, Native American and African American neighbors who were under attack by white supremacists. In response to a series of hate crimes, the community is moved to action. This video may be ordered from the Video and Film Lending Library of the American Friends Service Committee. You may order the video online at www.afsc.org or email Paul Shannon at pshannon@afsc.org or call 617-497-5273. For persons leading/facilitating discussion of the Not in Our Town video, the mission resource "**When Hate Comes to Town: A Handbook of Effective Community Responses, 3rd Edition**" is an excellent companion guide for combating racism and intolerance with action plans (Order # 1412, Price \$10.00). Order from Community and Institutional Ministries, 475 Riverside Drive, Room 1518, New York, NY 10115.

- B. **Communities of Shalom: Where, Why, How,**

video (13 minutes, Order # 2960, Price \$12.00). An introduction to Communities of Shalom in the U.S. and Africa. The focus is on building a multicultural church and community partnerships. Also available from Community and Institutional Ministries. See address above.

3. Affirm and support each other's efforts to take advantage of books and information, training events, colleges and community activities and other educational opportunities on inclusiveness, justice, and social action. Report on such activities to the unit.

4. Select one of the following culture-specific books and identify members of your UMW unit who will commit to have it read by a specific date for a group discussion of the book at a UMW unit or circle meeting. These books are from the UMW Reading Program:

- A. SHAFTED: FREE TRADE AND AMERICA'S WORKING POOR, Christine Ahn, Editor, Food First Books, 2003
- B. SILENT COVENANTS: BROWN VS. BOARD OF EDUCATION AND THE UNFULFILLED HOPES OF RACIAL REFORM by Derrick Bell. Oxford University Press, 2004 (Mission Resource Center Stock #1916)
- C. RACE AND RESISTANCE: AFRICAN AMERICANS IN THE 21ST CENTURY, Herb Boyd, Editor, South End Press (Mission Resource Center Stock #1920). Another option is to check out this book from the public library (Call Number is 305.896R118).
- D. O LORD, HOLD OUR HANDS: HOW A CHURCH THRIVES IN A MULTICULTURAL WORLD, Nibs Stroupe and Caroline Leach, Westminster John Knox Press, 2003 (Mission Resource Center Stock #1967)
- E. WAR, RACISM AND ECONOMIC INJUSTICE: THE GLOBAL RAVAGES OF CAPITALISM by Fidel Castro
- F. IT'S THE LITTLE THINGS: EVERYDAY INTERACTIONS THAT ANGER, ANNOY, AND DIVIDE THE RACES by Lena Williams. This book may also be obtained from the public library (Call Number is 305.8009 W724I).

5. Plan a joint unit or circle meeting with a unit/circle of a different racial background and use the January 2006 *Response* magazine issue on "Working for Racial Justice" to plan follow-up spiritual growth and social action activities. Pre-order enough copies of the January issue to ensure all participants have their own copy.

6. Develop a cultural exchange for opportunities to increase our awareness of ethnic groups, gifts and graces.
12. Develop and/or implement a worship program to be used by the local unit promoting cultural worship style, music and praise.

One of the easiest ways to accomplish this is to use the Prayer Calendar. Pen pals may be found for members of your unit or choose one missionary to contact regularly during the year, and study that country or area.

Choose a mission site in your area to visit or contact to see if you could do an ingathering of needs specific to the ethnicity of their clients.

Look for opportunities to visit other cultures in your area - an ethnic church, a festival or musical event by a culture other than your own.

7. Be involved in putting an end to unfair and abusive conditions of Mexican workers in Missouri poultry plants.

Participate in a letter writing campaign to state and national elected officials; to retailers across the state that sell products from these chicken packing plants; and to union officials. (Several plants are located in Monett, Missouri.)

Present an informational/action-orientated program in the local unit.

Contact our UMC, GBGM, and Missouri Conference Missionaries to the Hispanic Ministry, Fausto and Alma Villagrana, 310 Fourth Street, Monett, MO 65708, (417) 236-0254 home, (417)235-7446 office, to advocate in the local community.

8. Hold a postcard-writing session within the local unit to contact Legislators with regard to issues as determined by the Social Action Coordinator of the Conference. Contact your District Social Action Coordinator for "how to's" and timely "issues."
9. Send one member of the local unit to the Conference Charter for Racial Justice Event and have her present a report to the local unit. Involve your unit in the activities suggested at the workshop.
10. Have one or more persons in the unit participate in the Women's Division's Tracking Project. This involves being a data collector to track hate crimes and violence nationwide for the General Board of Global Ministries, Women's Division & Ministries in the Midst of Hate & Violence. For the complete details of what to report and how to report, contact your District Social Action Coordinator or President for the piece titled "Welcome to the Tracking Project."
11. Present a program on equal education, housing, employment, and/or medical care. Have the group discuss how the issue is affected by race in your area.

13. Monitor the decision-making process, meetings and programs of your unit to ensure inclusiveness and to advocate for the needs and concerns of the racial and ethnic minority members.

Once your unit has met the requirements and become a member of the "Club", you must maintain your membership by completing one additional requirement annually. This should also be reported to your District President.

If at any time there is a lapse in meeting an additional requirement annually, the unit must again complete four requirements to re-achieve membership.

CONTACT YOUR DISTRICT PRESIDENT IF YOU HAVE QUESTIONS OR NEED ASSISTANCE.

This club was established in 1998 by the Missouri West Conference United Methodist Women in an effort to promote the study of and implementation of the Charter for Racial Justice Policies. The Club was named to honor a prominent United Methodist Woman in the Missouri West Conference. With her permission and blessing, the club was called "The Mai Gray Charter for Racial Justice Club".

Mai Evelyn Hutson Gray, a native of Jackson, Tennessee, graduated from Merry High School and Lane College in Jackson, Gammon Theological Seminary in Atlanta, and the University of Missouri at Kansas City. She was a member of the "Committee of 24" that proposed the organizational structure for United Methodist Women in 1972. She was elected a member of the Women's Division in 1972 and from 1976 to 1980 served as the Division's first black president. She was a trustee of Saint Paul School of Theology in Kansas City, MO, represented the United Methodist Church at the British Methodist Conference, was invited to the Consultation on Salt II for religious leaders at the White House and participated in a development-education study in China and India. She was a member of the Church Women United Executive Council (1980-84) and the World Methodist Council Executive Committee (1981-86), an alternate delegate to the World Council of Churches Assembly in 1983, and a delegate to the 1984 United Methodist General Conference at which she presented a portion of the Lay Address.

Her honors include the establishment of the Mai Gray Education Grant to women and children in Zimbabwe, Namibia, and South Africa, a gift of the Women's Division in honor of her presidency; and the Centime Poinsettia Clark Award.

Mai passed away shortly after the 2010 Assembly in St. Louis.

Mabel's Muse

~Mabel Unser, President

Proverbs 16: 3

Commit to the Lord whatever you do, and your plans will succeed.

As we enter into this new year I would like to carry this scripture with us as we plan and work on the activities of our conference. Letting the Lord lead us can only bring success in whatever we do.

From a small devotional book titled "Keeping God in the Small Stuff," I share these words. "Political groups and social organizations like to talk about the 'rights' of their members. They want the full entitlement to the benefits that are rightfully theirs. Rights are all about 'me, me, me.'

That is not the attitude God wants you to have. He wants you to forget about your rights and focus on your responsibilities. He wants you fully engaged in helping others. Responsibilities are all about 'you, you, you.'

God wouldn't be a very popular politician in our society. Most people want to be served and enjoy their privileges. God calls us to be submissive and put the interest of others above our own. We are responsible to God to become what God has made it possible for us to become."

As we continue our work for women, children and youth in Missouri may we always remember that we are responsible to God and that each plan that we make will be led by God as we pray and seek His guidance.

Seeking Laity Leadership

-Carol Smith, Historian

In the recently received THE MISSOURI CONFERENCE REVIEW, January 2011 issue there is an article titled; **Potential laity delegates General and Jurisdictions Conferences encouraged to fill out profiles....** I would like to expand this article with my personal experiences to lay women of the Missouri Conference.

In 1995 a very dear friend with whom I was serving on The Lay Ministry Team encouraged me to take a huge step in my involvement of leadership in the Conference and make it known I would like to be elected a delegate to attend General Conference. I indicated to friends and conference members I would like to be considered for election. My District started passing the word and encouraged other laity to support me. The day I was elected on the last ballot of the laity was also the day my daughter was ordained a deacon in the conference. Wow! Who would have ever known from that starting point I would be an elected delegate for four General Conferences: one of those chair of the delegation and another mentor a new delegate through election and service, what a joy!

If elected you would be representing our Missouri Conference when very important decisions are made of who we want to be and how we want to serve, and learning what we are presently doing around the world. It is hard work, monthly meetings, reading and studying pages and pages of material. Having to say no to some responsibilities with spouse, family and friends and giving ten days plus travel days for General Conference and four days plus travel days to Jurisdictional Conference beginning the day you are elected until the last day of Jurisdictional Conference in 2012.

My request to women laity of Missouri Conference is to pray and

Social Action Opportunity

Who: All adults are welcome – fly in when you want; stay as long as you want

What: Interactive educational seminar sponsored by Kansas East Conference United Methodist Women for anyone who wants to study complex social issues from a faith perspective.

Seminar will include theological reflections, meetings with human rights activists, visits to Senators and Representatives in Washington D.C., etc.

Costs: \$12 per person per day - \$36 for the three day seminar
Airfare – under \$300 (estimate)

Lodging –we hope to get group rates for about \$150/night per room

Meals and touring costs

For more information contact Jeanette Grenz – email jgrenz@sbcglobal.net or call 913-239-0679.

To make your reservation, please send your name, address, phone number, e-mail and a check for \$36 made out to KEC UMW to cover the cost of the actual seminar.

Mail to Page Campbell, 11426 West 99th Pl., Overland Park, KS 66214.

Registration and payment due **March 1, 2011** and will be accepted on a first come, first serve basis (limit 35-40 people).

listen to the Lord's direction. You will need to be in close communion with God, seeking his will, inviting him to come with directions for you. Also evaluate your personal health. Check with your employer regarding time away or vacation time from work over the period of a year, and if you feel you are led to notify the Conference members you would like to say yes to be considered. You can find the information you need by checking the Conference website at <http://tinyurl.com/laityprofile>.

Do not have a pre-determined agenda of what you will do when you go. You can best serve if you place your mind and heart open to do the work of the Lord. There will be time for conversation and information at meetings to share with other delegates.

If you know of someone in your local church or UMW you think would make a good delegate talk to them, encourage them, offer to assist them if they would like to serve, have them check the Conference website for more information and inform your local church lay member to Annual Conference.

If you have questions of some who have gone before please contact me or other women who have served as delegates and we will be glad to visit with you. I feel called by God to encourage others to have this experience to serve our denomination as active lay women in these conferences. Some of the decisions at General Conference have a direct impact in the policies and procedures of United Methodist Women.

My time of service is ended and I praise you who will answer the call to serve in the future.

573-999-7087

**MISSOURI CONFERENCE
UNITED METHODIST WOMEN
CRITERIA REPORT SHORT FORM FOR 2011**

(To be completed by **ALL** units even if not completing the requirements for a Mission Today Unit.)

- *1. Implement the Charter for Racial Justice. After establishing the “club” membership, the Unit must complete a different requirement each year.
Additional Requirement # _____ was completed this year.
- *2. Make and meet Pledge to Mission.
- *3. 5-Star Unit.
4. \$25 for ribbons/corsages program.
5. Candle burning or Mission Minute Certificate
- *6. At least two (2) members subscribe to RESPONSE.
7. At least two people complete one of the Reading Program Plans and report on one of the books read
Plan I _____ Plan II _____ Plan III _____
Plan IV _____ EORO _____
8. “Response Moment” at each meeting.
- *9. Prayer Calendar at each general meeting.
10. Write to at least five (5) persons listed in the Prayer Calendar at least twice a year.
11. Prayer partner program for the year.
12. Plan or participate in a Spiritual Growth retreat.
- *13. Use at least two (2) programs from the current program book during the year.
14. Participate in the “Call to Prayer and Self-Denial” program and offering.
15. Sponsor/send at least one (1) person to the Cooperative School of Christian Mission.
- *16. Conduct/attend at least one (1) Mission Study OR
Have at least 10% of the local Unit membership participate in a District Mission study
- *17. Make a pledge to care for God’s creation and become a “Green” United Methodist Women unit.
www.umwonline.org
18. Sponsor a young woman to attend the Cooperative School of Christian Mission.
19. Obtain information, visit, or invite a representative from one of the National Mission Institution Agencies to present a program about their Agency.
Our Unit had/or made a presentation about _____ (fill in Agency name here) on _____ (date)
20. At least one (1) person join the United Methodist Women’s Action Network & respond to Legislative information at least three (3) times a year.
21. Invite State Representative and/or State Senator or a representative, to a local Unit meeting
22. One (1) person shall attend Legislative Event and contact their Senator and/or Representative.
23. Initiate or continue one study of the UMW Christian Social Responsibility Campaign Issues.
24. Sponsor at least one person and/or teen to attend the Conference Annual Meeting and at least two members of the local Unit to attend a District event.
25. Co-sponsor a Children’s Sabbath.
- *26. Add at least two (2) new members.
27. Observe UMW Sunday.
28. Sponsor a woman to attend one or more of the Conference sponsored Retreats.
29. Sponsor a teen to attend one or more of the Conference sponsored retreats.
30. Start a new circle/UMW group.
31. Nominate one (1) member for the District Woman in Mission of the Year.
32. Invite a District/Conference officer to one of the Unit meetings during the year.
33. The local unit will have one member join the MO Conference UMW email group, Mission-Online-of-MO-UMW. Instructions for joining can be found at:
www.moumethodist.org/umwemail
34. The local unit will have one member with e-mail access be the point of contact for their unit (and will notify the District Secretary and/or District Communications Coordinator with this information

Please return this form (to your District Education & Interpretation Coordinator) so we will have this membership information. Thank you.

Additional Information:

Total membership on 1/1/11 _____

Total membership on 12/31/11 _____

Submit the report to the District Education and Interpretation Coordinator by **12/31/11**

Person Reporting _____

Address _____

Phone _____

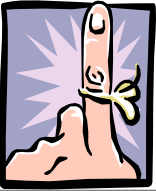
Unit/Church _____

(Please print all information)

Mission Walk 2011 ~ Dixie Stone

Those Feet were made for walking and that's just what they'll do, will you come and join us when we walk in June?

We will have our 5th annual Mission Walk at Annual Conference in Springfield in June. If you cannot attend then send \$20 and have someone walk for you. Some units ask their pastor or lay member to Annual Conference to represent them. They can pick up their t-shirts at the United Methodist Women booth. We will have a list of units who have sent in the \$20.00. If you have not turned in the form and money, then they can sign up there at the booth. Please support this worthy cause as it goes to Mission Giving.



Don't Forget!
March 1-2 Legislative Training Event
March 10 Deadline: Mission Voice Articles
May 13-14 Spiritual Growth Retreat

BEING GOD'S FEET UNIT MISSION WALKER

Yes our unit, _____ from the _____ District is being
God's Feet for Mission and wants to be a unit Mission walker.

Even though we will not be able to attend, enclosed is our registration
fee for \$20 payable to MO Conference UMW

Since we want all of Missouri to be Walkers for Christ, we have
included a few extra dollars of \$ _____.



Send this form and check to
Carolyn Celestine
9529 Outlook Drive
Overland Park, KS 66207

The Mission Voice
of the Missouri Conference
United Methodist Women

, Katie Willis, Editor
1568 Highway J
Wright City, MO 63390

Return Service Requested